

# Percent of Population Ages 5 to 9 in South West Edmonton

## Legend

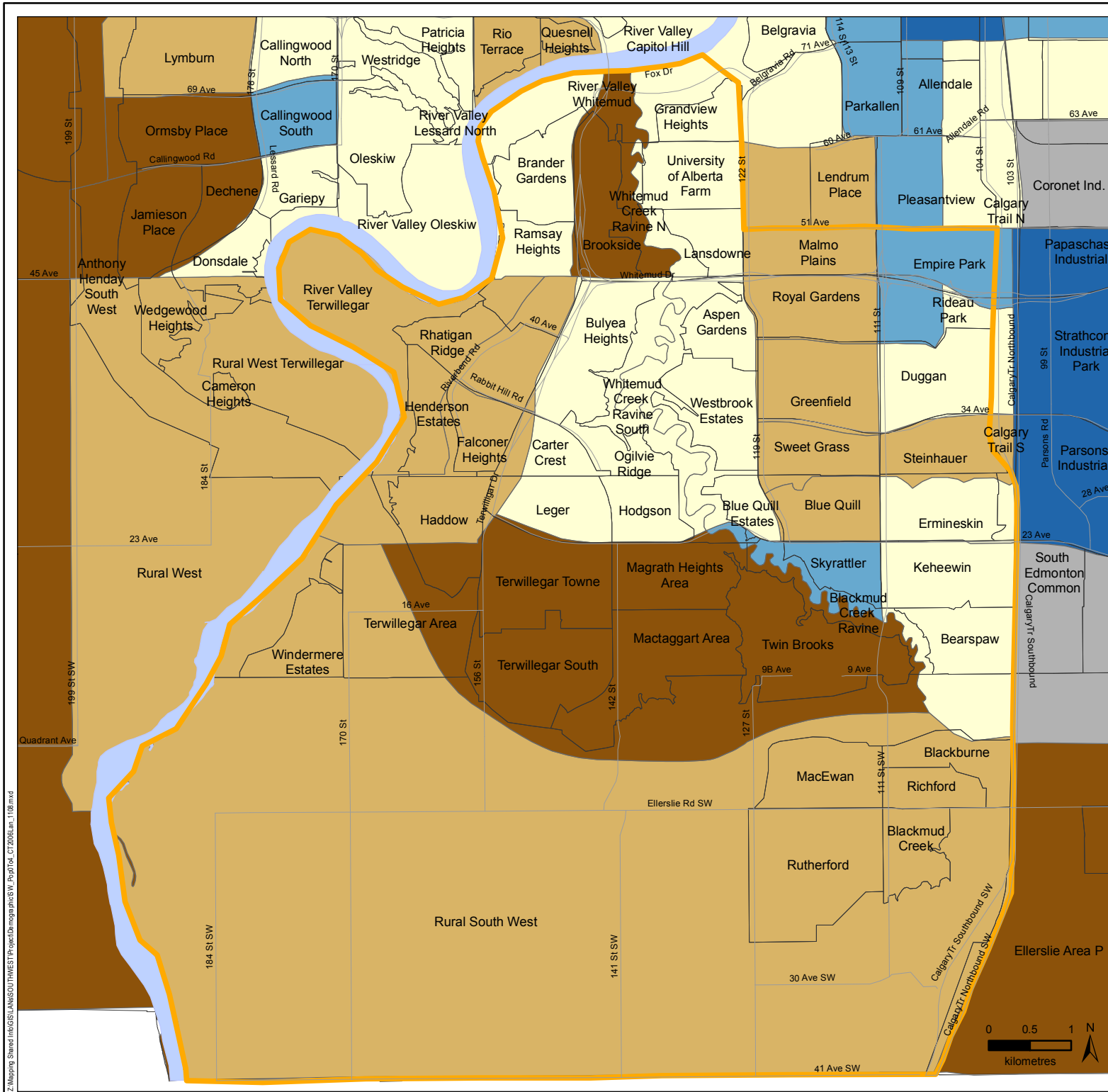
### Population 5 to 9 (%)

- 0% - 2.1%
- 2.2% - 4.2%
- 4.3% - 5.5%
- 5.6% - 6.8%
- 6.9% - 9.2%
- Non-residential
- South West Boundary
- Neighbourhood Boundary

Edmonton Mean: 5.2%

Data Sources: Demographic data provided by Statistics Canada, 2006 Census data; Spatial data provided by DMTI Spatial, 2007.

This map was created for the purposes of collaborative planning. The information presented in the map is accurate to the best of our knowledge using the data available. We accept no liability for the use or misuse of this information.  
M.A.P.S. Alberta Capital Region 11/2008



Z:\Mapping\Shared\InfoGIS\LAN\SOUTH WEST\Project\Demographic\SW\_Pop\Doc\_C12\08Jan\_1108.mxd