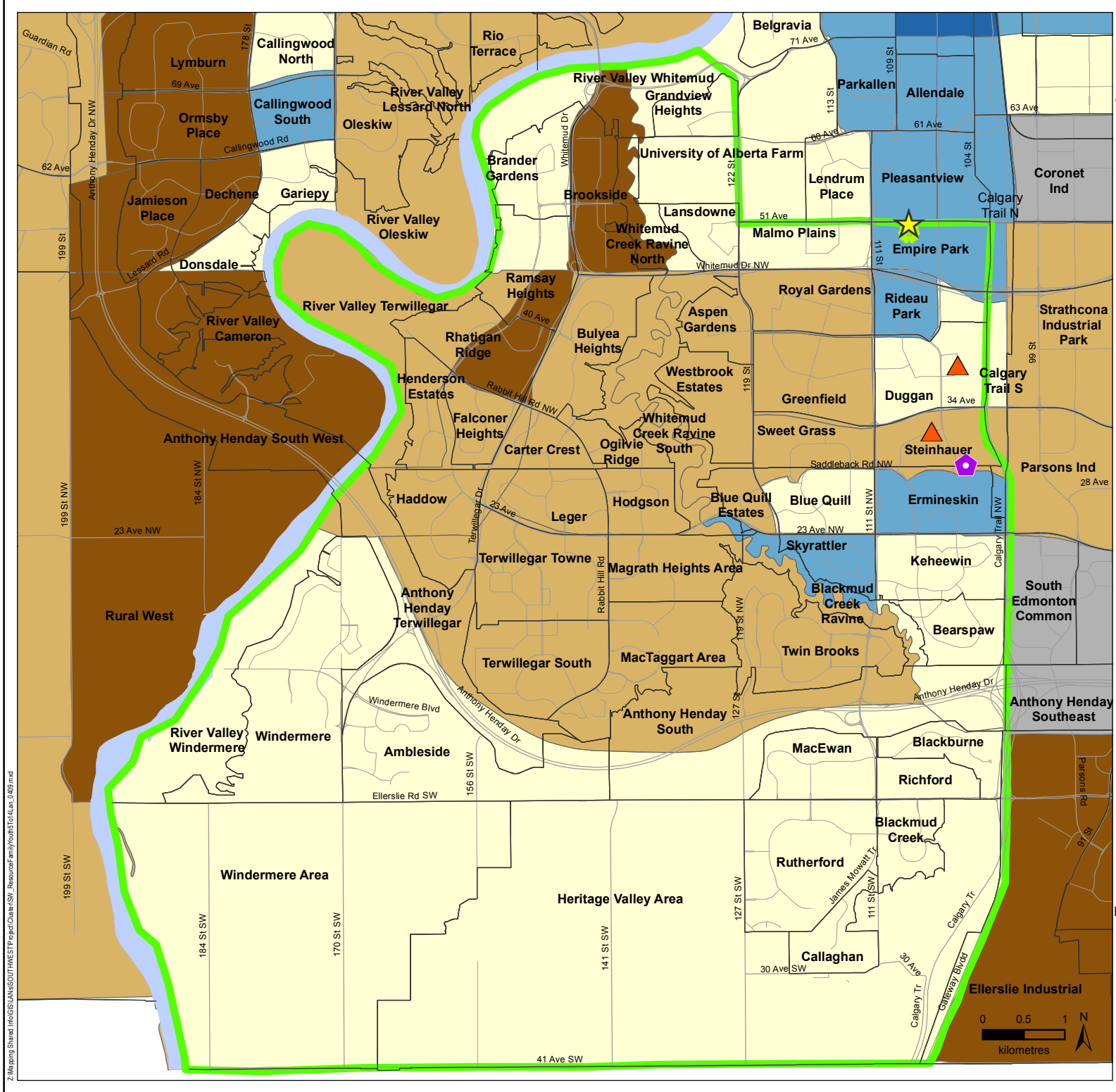


Support Services for Children and Youth with Percent of Population Ages 5 to 14 in South West Edmonton



Legend

- ABC Head Start McKee Site
- Club Connect *
- Alberta Child and Family Services
- Health for Two
- South West Boundary
- Neighbourhood Boundary
- Non-residential

Population 5 to 14 (%)

- 1.2% - 5.5%
- 5.6% - 9.4%
- 9.5% - 12%
- 12.1% - 14.3%
- 14.4% - 17.9%

Edmonton Mean: 11.2%

* Club Connect: Boys and Girls Club of Edmonton \ Big Brother And Big Sister

Data Sources: Demographic data provided by Statistics Canada, 2006 Census data; Spatial data provided by DMTI Spatial, 2007. Resource Information: Southwest, February 2009.

This map was created for the purposes of collaborative planning. The information presented in the map is accurate to the best of our knowledge using the data available. We accept no liability for the use or misuse of this information.

M.A.P.S. Alberta Capital Region 05/2009

Z:\Mapping\Shared_Info\GIS\ANNSOUTHWEST\Project\Cartas\SW_Resource\FamilyYouth\04Jan_049.mxd