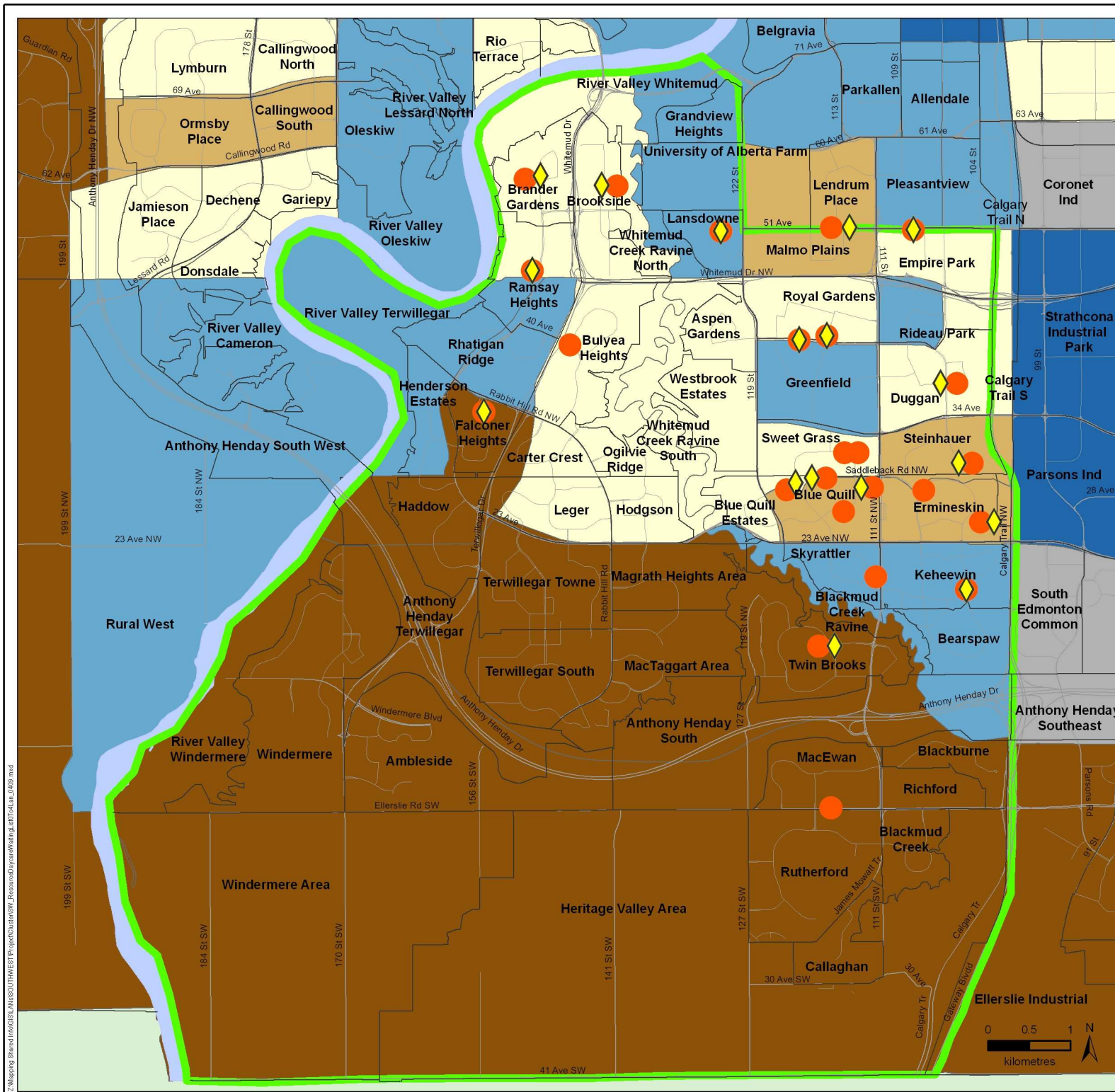


# Daycares and Daycares with Waiting List and Percent of Population Ages 0 to 4 in South West Edmonton



### Legend

- Daycare
- ◆ Daycare with Waiting List
- ▭ South West Boundary
- ▭ Neighbourhood Boundary
- ▭ Non-residential

### Population 0 to 4 (%)

- 0% - 2.2%
- 2.3% - 4.5%
- 4.6% - 5.7%
- 5.8% - 7.3%
- 7.4% - 10.7%

Edmonton Mean: 5.2%

Data Sources: Demographic data provided by Statistics Canada, 2006 Census data; Spatial data provided by DMTI Spatial, 2007. Resource Information: Southwest, August 2008

This map was created for the purposes of collaborative planning. The information presented in the map is accurate to the best of our knowledge using the data available. We accept no liability for the use or misuse of this information. M.A.P.S. Alberta Capital Region 04/2009

Z:\Mapping\Shared\InfoGIS\AU\SouthWest\Project\Assets\SW\_Resonok\DaycareWaitingList\ca\_10408.mxd