

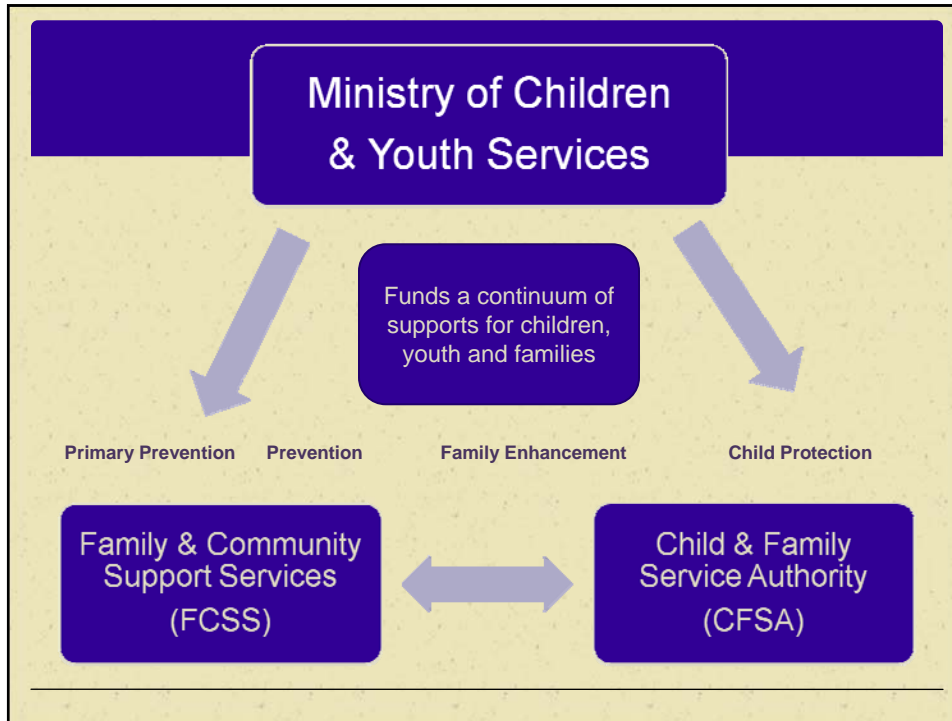
PARKLAND AND AREA COMMUNITY PARTNERSHIP PRESENTATION

To Parkland County Council

November 3, 2009

BACKGROUND

- ❑ The 2003 – 2006 Alberta Children's Services Business Plan included an annual \$2,000,000 special allocation called the Community Partnership Enhancement Fund (C.P.E.F.). This fund remained a budget item until March 31st, 2009.
- ❑ The fund was intended to assist Family and Community Support Services (FCSS) and Child and Family Services Authorities (CFSAs) to work more closely together in support of children, youth and families.



Community Partnership Enhancement Fund (C.P.E.F.) STRATEGIES

- Increase community or region-wide capacity to help children, youth and families.
- Support efforts by Children & Family Service Authorities (CFSAs) and Family & Community Support Services (FCSS) programs to establish and/or enhance existing partnerships.

PARKLAND AND AREA COMMUNITY PARTNERSHIP

Parkland and Area Community Partnership

General Membership

Executive Committee

3 – CFSA Reps

3 – FCSS Reps

3 – First Nations Reps

CPEF Facilitator

Regional CFSA Consultant



VISION STATEMENT:

- ❖ Healthy and resilient children, families, and communities, achieving their full potential.



MISSION:

- ❖ The Parkland and Area Community Partnership will identify existing services, trends, strengths, and gaps in service.





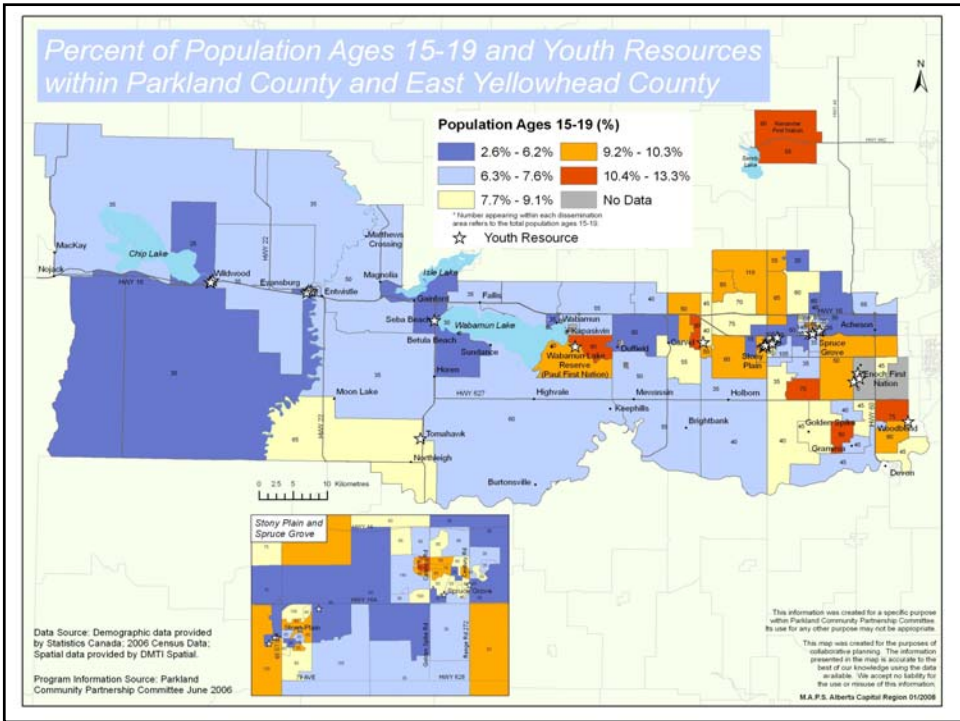
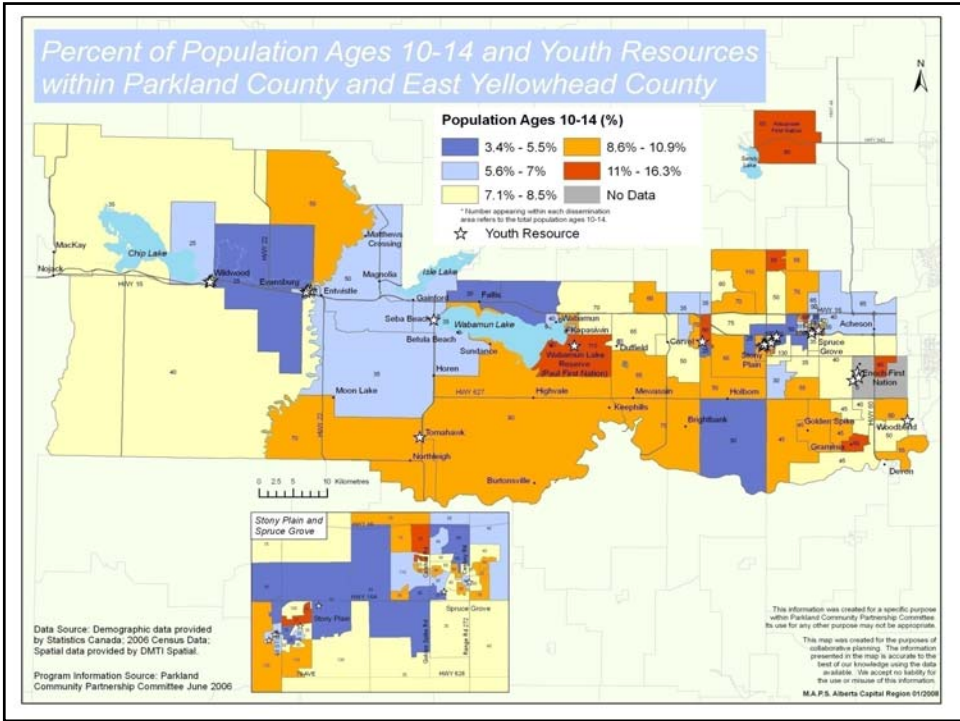
GOAL:

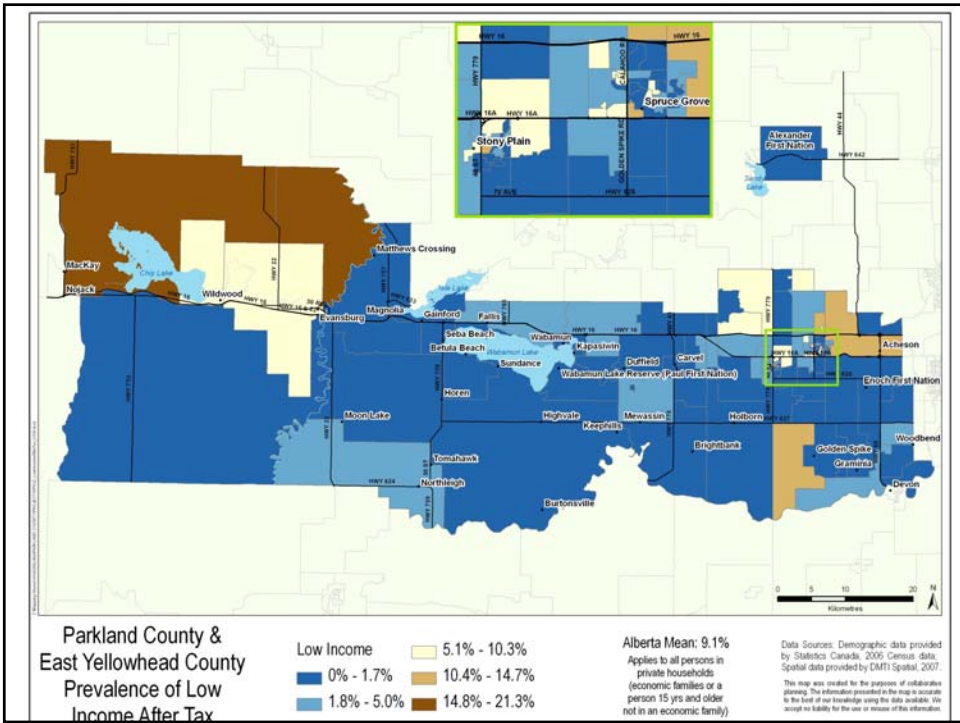
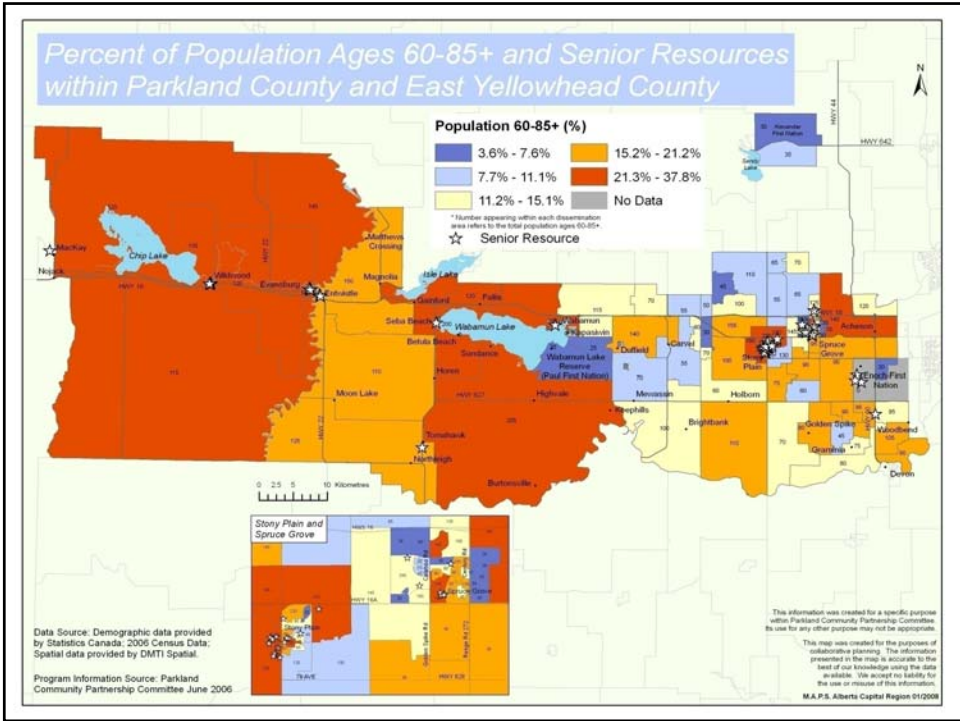
- ❖ **An enhanced continuum of supports and services for children and families in our region.**

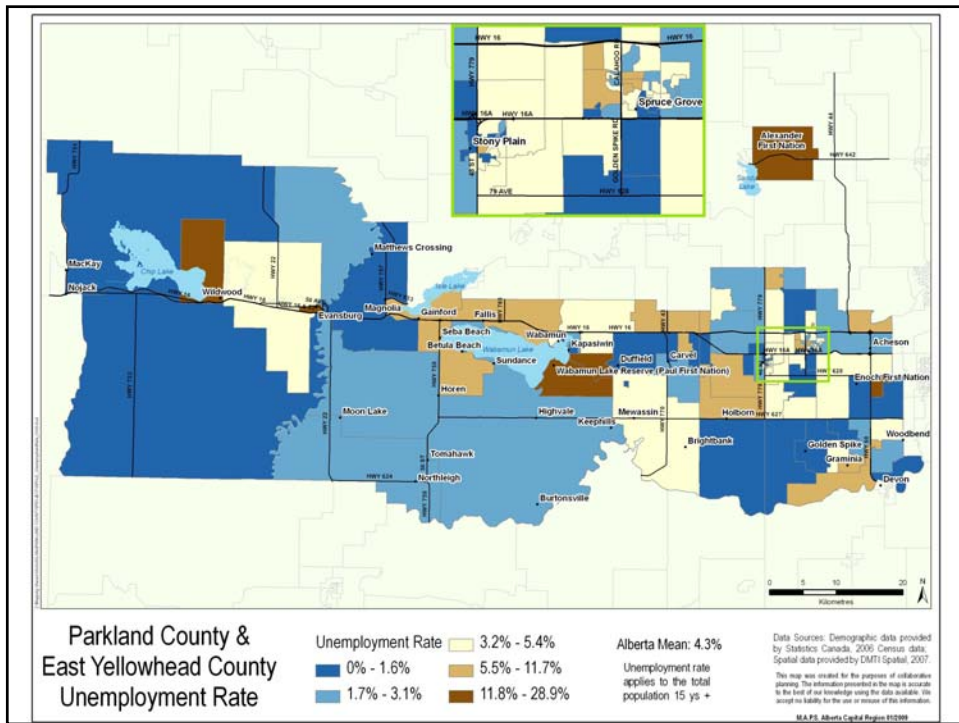
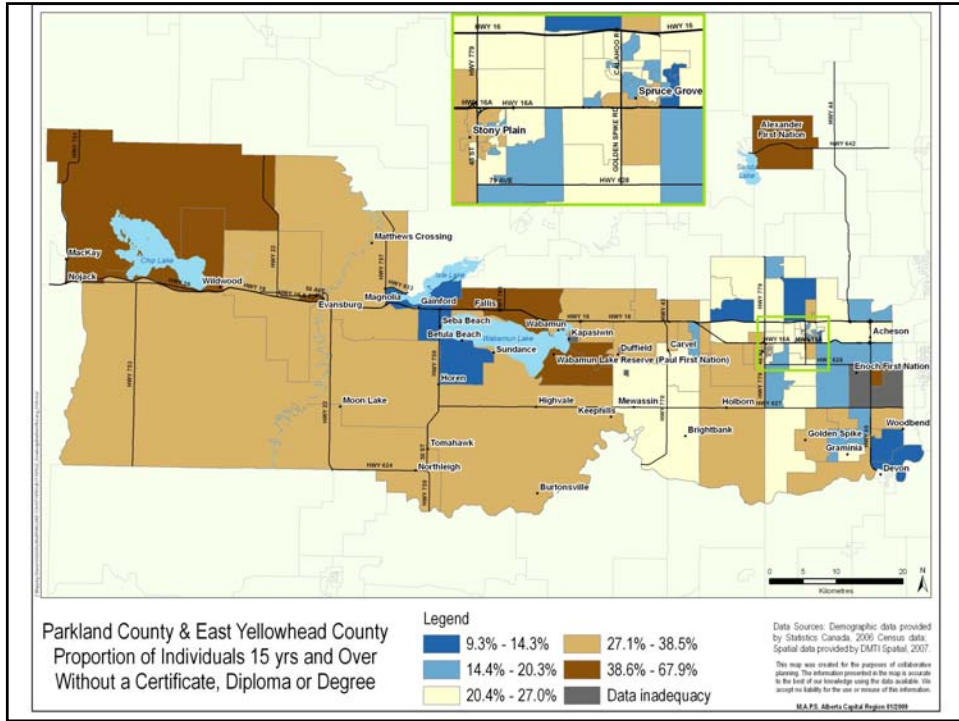


GUIDING PRINCIPLES:

- ❖ **Using a collaborative planning approach will ensure an optimum result for children, youth & families.**
- ❖ **Conscious attention to the inclusion of First Nations and Métis people will assist in the creation of services for all children and families in the region.**







ACTION PLAN:



B. Collaborative Planning

- ❖ Identify needs & gaps
- ❖ Identify strengths
- ❖ Identify areas of focus/strategies

Participants:

Educational & Awareness Services:

- ◊ Meridian Heights School
- ◊ Sunrise Support Service
- ◊ Coordinated Suicide Prevention
- ◊ Evergreen Catholic School Division
- ◊ Tri-Municipal Drug Strategy Team
- ◊ Simon Poultney Foundation

Employment Services:

- ◊ Bredin Institute

First Response / Crisis Services

- ◊ Parkland Food Bank
- ◊ Victims Services
- ◊ Parkland NeighbourLink
- ◊ Parkland & Area Youth Emergency Shelter
- ◊ Alberta Immigration and Employment (Income Support)
- ◊ Parkland Turning Points Society
- ◊ RCMP
- ◊ Child & Family Services (Stony Plain/Spruce Grove)

Prevention Focused Support Services:

- ◊ FCSS Yellowhead County
- ◊ FCSS Stony Plain
- ◊ FCSS Spruce Grove

Youth Services:

- ◊ McMann
- ◊ Big Brothers/Big Sisters

Family Support Services – Programs:

- ◊ Alberta Parenting for the Future
- ◊ Aboriginal Parent Link
- ◊ The Family Centre
- ◊ Child & Family Services (Stony Plain/Spruce Grove)

Health Services:

- ◊ Capital Health
- ◊ Alberta Health Services
- ◊ One Health

Counselling Services:

- ◊ High Country Counselling
- ◊ Native Counselling Services
- ◊ Mental Health

Community Partnership Support:

- ◊ Community Partnership Enhancement Fund
- ◊ MAPS Alberta
- ◊ Yellowhead County
- ◊ Region 6 CFSA
- ◊ CFSA - First Nations

Additional Services:

- ◊ Specialized Transit Service
- ◊ Community Corrections (Probation)
- ◊ Spruce Grove Public Library
- ◊ Safe City
- ◊ Paul First Nation

Areas of Interest Identified at Fall Gathering 2007

- ◆ Early Childhood
- ◆ Youth
- ◆ Seniors
- ◆ Housing
- ◆ Low Income
- ◆ Family Violence

Issues Identified - 2009

- ◆ Family violence
- ◆ Parenting skills
- ◆ Addictions
- ◆ Employment / finances
- ◆ Childcare
- ◆ Decreased capacity to offer services – increased population
- ◆ Families with complex needs
- ◆ Accessibility issues (services available are often not accessible to vulnerable families)

Trends Identified

- ◆ Population growth doubled in 10 years
- ◆ Individualism vs. collective
- ◆ Focus on materialism vs. relationships
- ◆ Economics, baby boom (600)
- ◆ Unemployment, transitional population
- ◆ Fear based thinking, behavior
- ◆ Perception of increased crime
- ◆ Increase in teen pregnancies
- ◆ Technological vulnerability
- ◆ More vulnerable families
- ◆ Increased AISH recipients
- ◆ Increased Food Bank use

What can we do together to address these issues?

- ◆ Programs in community based settings; including on-line
- ◆ Enhance childcare, using this as an instrument to support active/healthy parenting
- ◆ Collaborate more regarding services; learn from what we did, are doing well
- ◆ Create a conferencing model for families in crisis
- ◆ Broaden family violence strategy
- ◆ Promote parent knowledge with respect to healthy boundaries, role modeling
- ◆ Create a common intake and referral process
- ◆ Collaborate on addressing affordable housing and emergency shelter needs
- ◆ Promote the value of positive, active parenting

FOCUS INITIATIVES:



- ❖ A working committee of local human service in-take staff called “*Critical Connections*” was formed to respond to emerging trends, gaps in service and develop a common intake form.
- ❖ Expanding on services and supports in response to Family Violence.
- ❖ Promote positive, active parenting.

WHAT CAN THE PARKLAND AND AREA COMMUNITY PARTNERSHIP OFFER YOU?

- ❖ By acting as a consultative group with respect to social trends in our area.
- ❖ By providing a mechanism to organize focus groups.
- ❖ By providing information gained in social mapping and documentation of regional resources.

QUESTIONS?

THANK YOU